

NSW LAND AND HOUSING CORPORATION

35-39 WEST STREET, 5 LEO AVENUE LURNEA NSW 2170

LOT 15,16,17/DP21559, LOT 11/DP215559

NEW HOUSING DEVELOPMENT



DRAWING SCHEDULE	
Sheet Number	Sheet Title
001	LOCATION PLAN & DRAWING SCHEDULE
101	EROSION & SEDIMENT CONTROL PLAN
111	EROSION & SEDIMENT CONTROL DETAILS
201	CUT AND FILL PLAN
301	STORMWATER MANAGEMENT PLAN SHEET 1 OF 2
302	STORMWATER MANAGEMENT PLAN SHEET 2 OF 2
401	SITEWORKS PLAN
431	LONGITUDINAL PROFILE - MC01
601	DETAIL SHEET

LOCALITY PLAN

N.T.S.

THIS DRAWING IS TO BE VIEWED IN COLOUR AS SOME FEATURES / SYMBOLS ARE DIFFERENTIATED BY COLOUR. DRAWING NOT TO BE RELIED ON IF PRINTED IN GREYSCALE.

100mm ON ORIGINAL DRAWING - DO NOT SCALE DRAWING

D	ISSUED FOR DETAILED DESIGN	15.09.23	SW	IR	COORDS: GDA2020 MGA ZONE 56 DATUM: ALL LEVELS TO A.H.D. SCALE: N.T.S. SURVEYED: MEPSTEAD SURVEY DATE: 29.09.2021 APPROVED / PROJECT LEADER MARK BAKER
C	RE-ISSUED FOR DRAFT REF	28.06.23	SW	IR	
B	ISSUED FOR DRAFT REF	25.05.23	SW	IR	
A	ISSUED FOR CLIENT REVIEW	31.10.22	LY	IR	
REV	AMENDMENT / REASON FOR ISSUE	DATE	DES.	DWN.	

↑

N

NSW GOVERNMENT

tonkin

tonkin.com.au

NOT FOR CONSTRUCTION

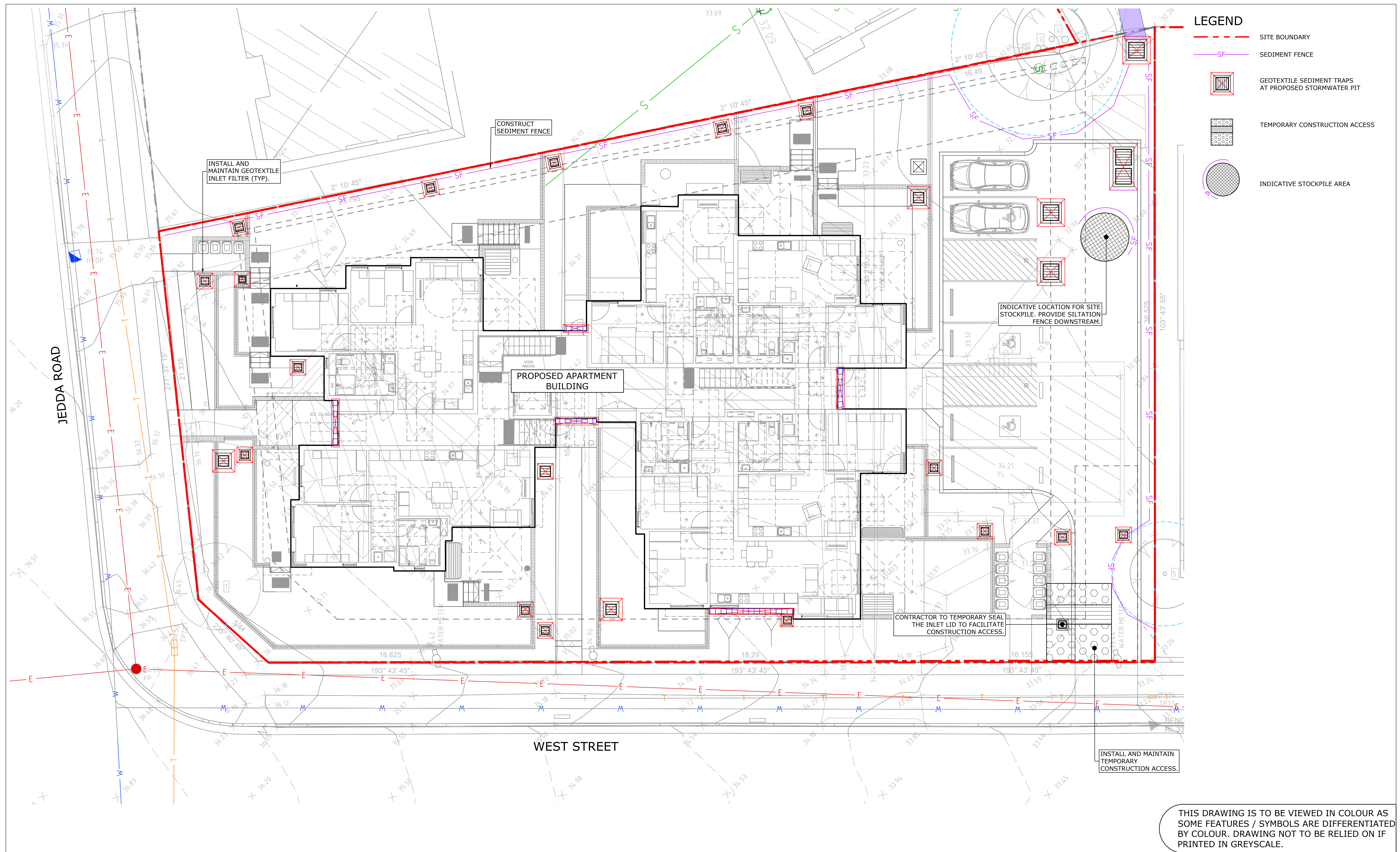
NSW LAND AND HOUSING CORPORATION

35-39 WEST STREET, 5 LEO AVE LURNEA NSW 2170
LOT 15,16,17/DP21559, LOT 11/DP215659
NEW HOUSING DEVELOPMENT
LOCATION PLAN & DRAWING SCHEDULE

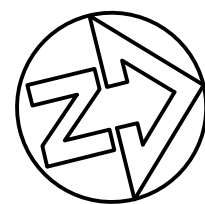
FILENAME:	PROJECT NUMBER	DRAWING NUMBER	REVISION
211913_001_COV.DWG	211913	001	D

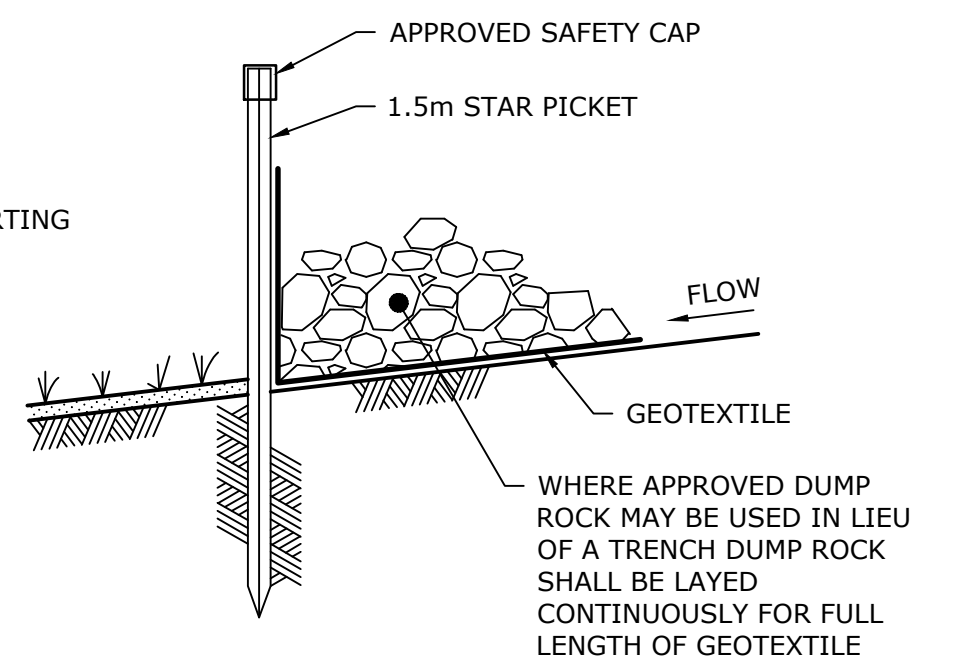
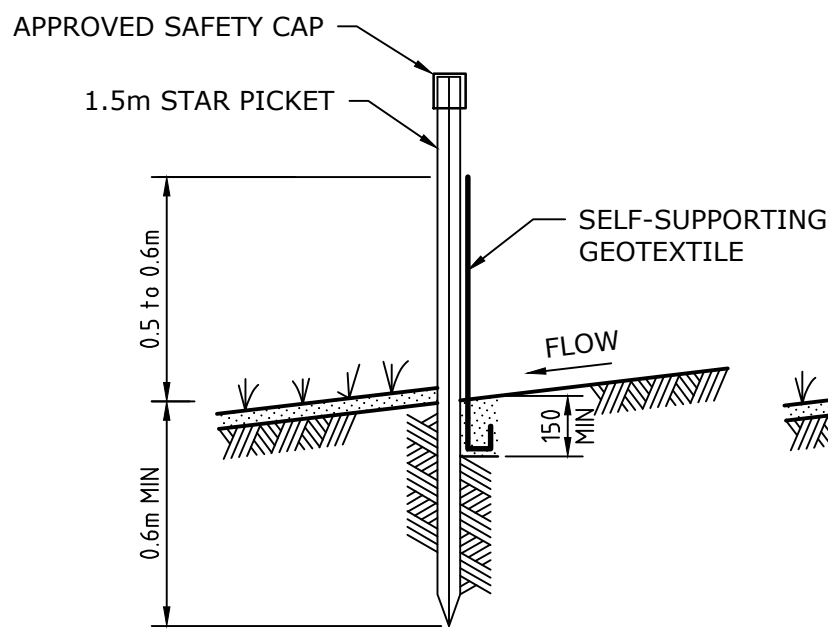
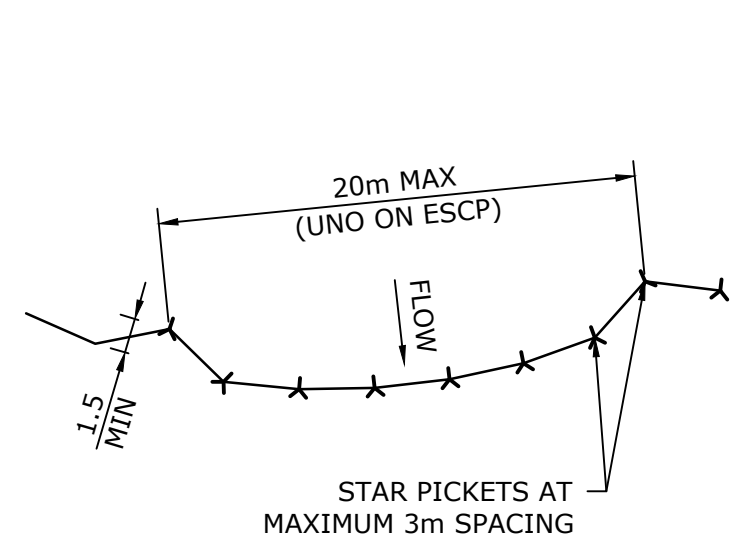
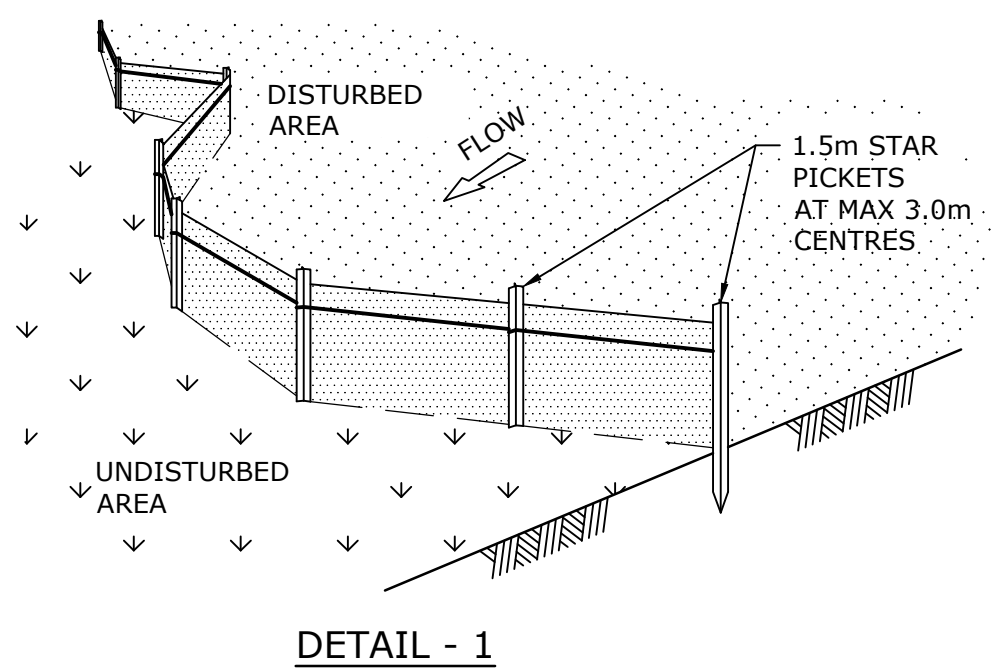
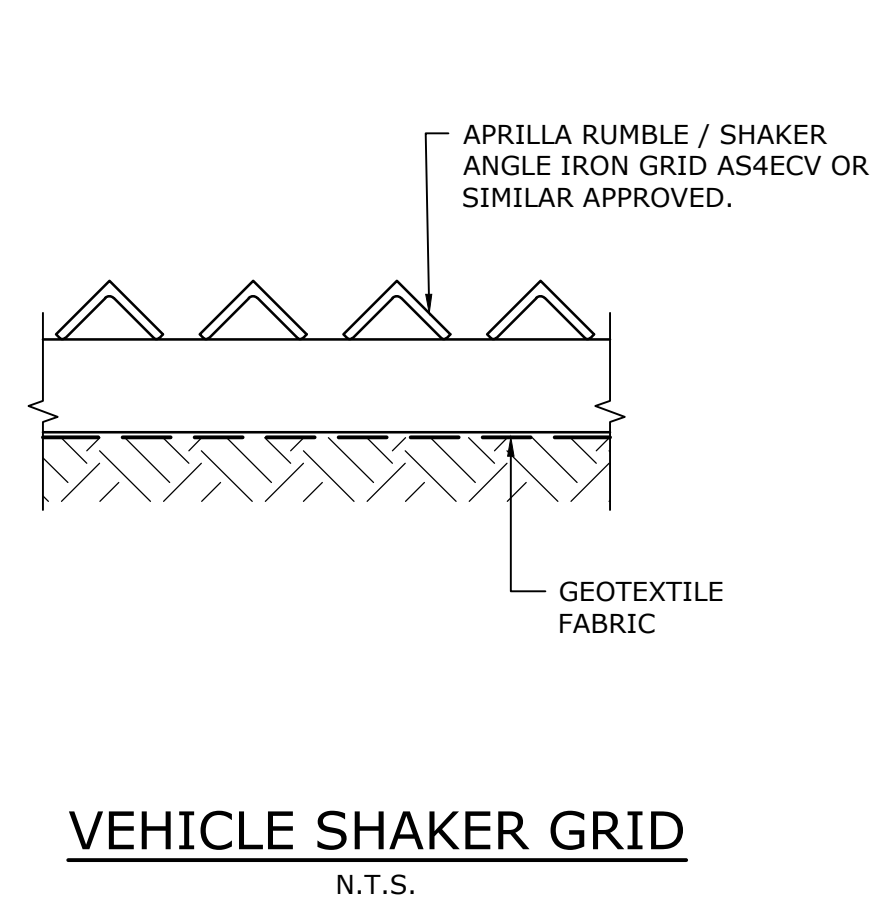
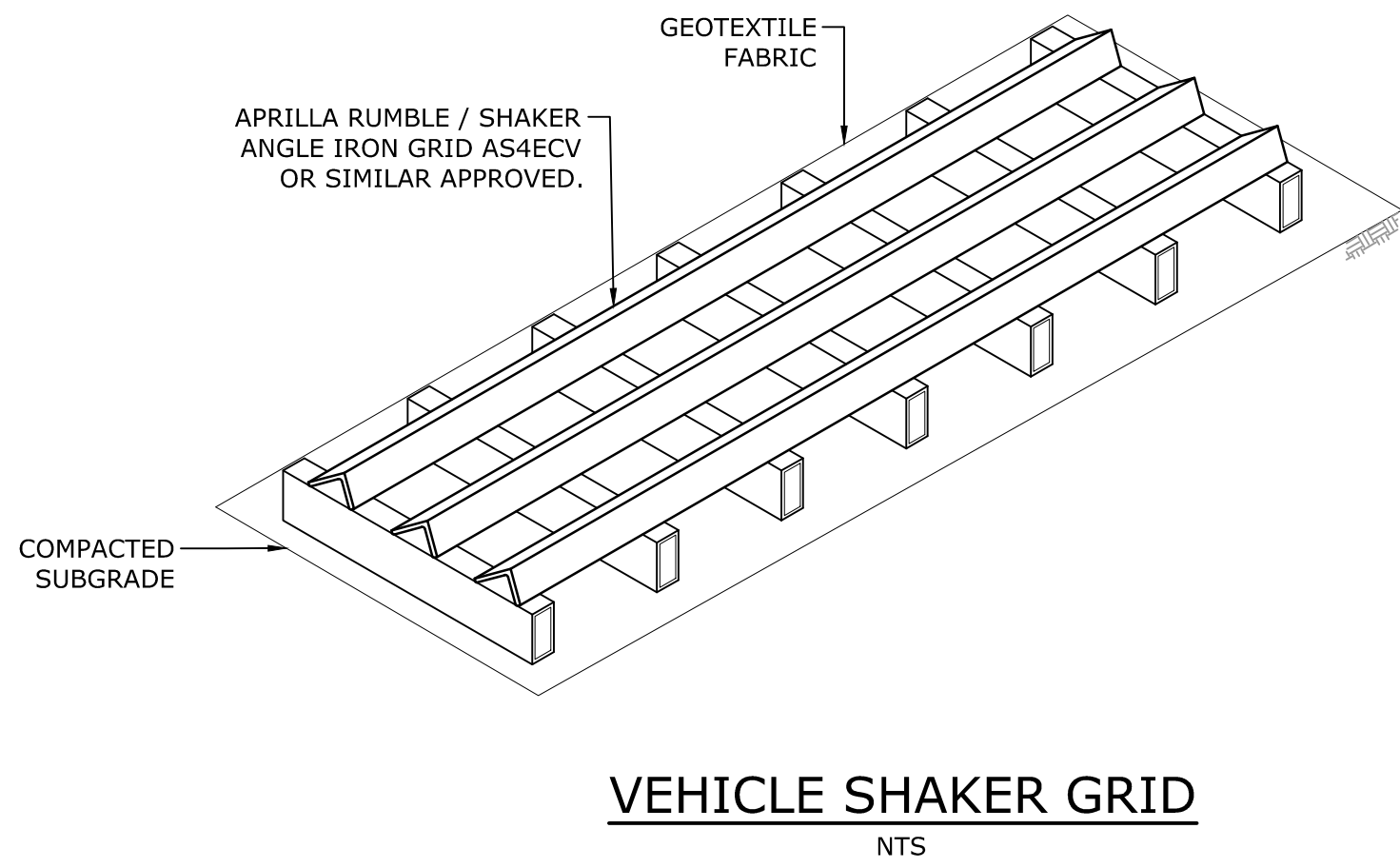
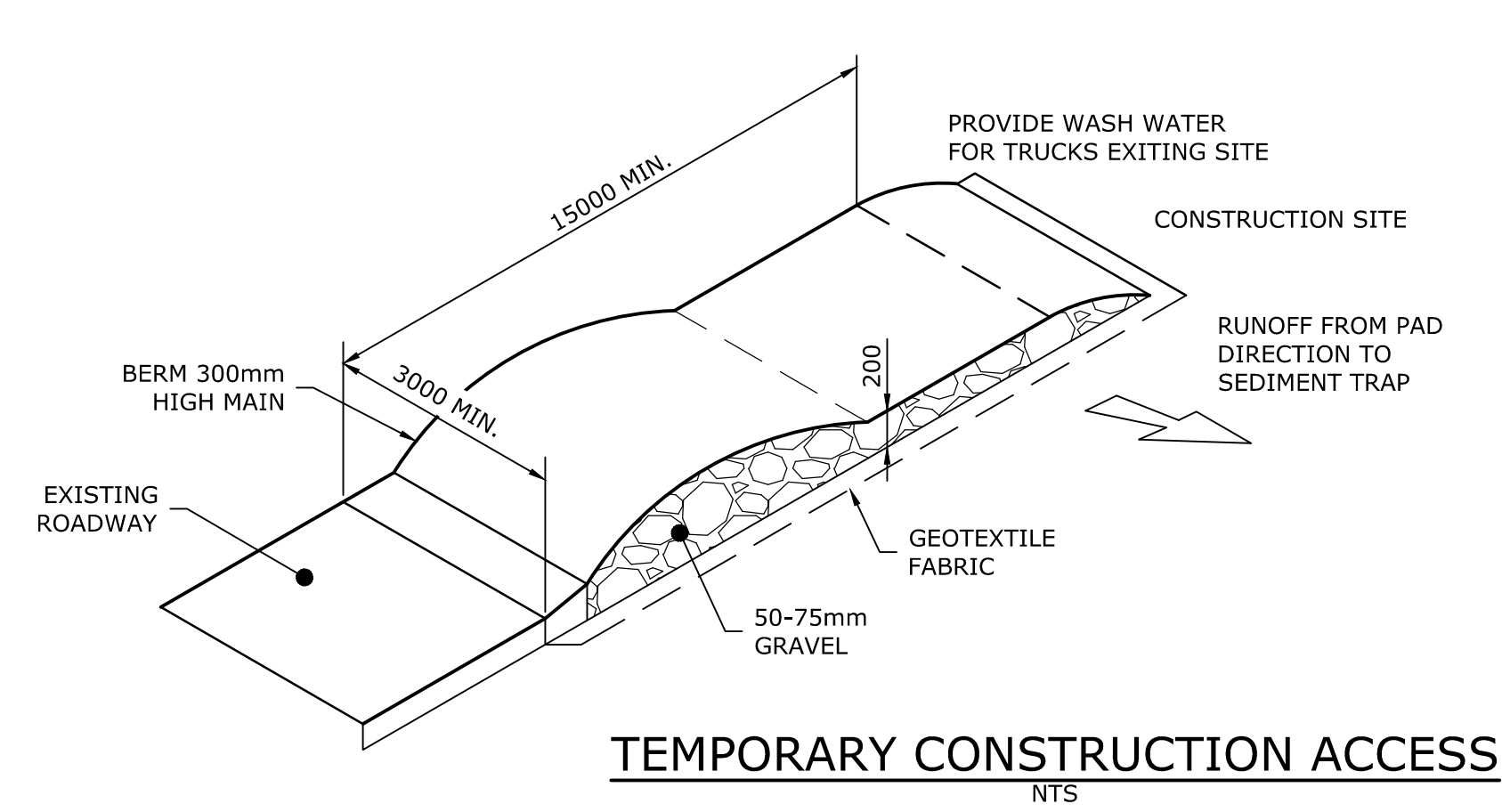
© TONKIN CONSULTING

T:\2021\211913 LAHC LURNEA - MCINTOSH PHELPS\4_WORKING\1 CAD\01 DWG\211913_001_COV.DWG -001-COV- (15-09-23 4:25:24PM)

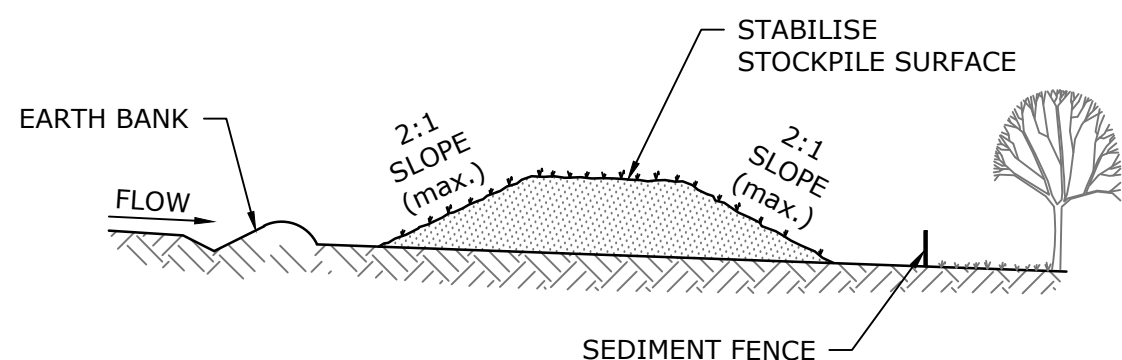
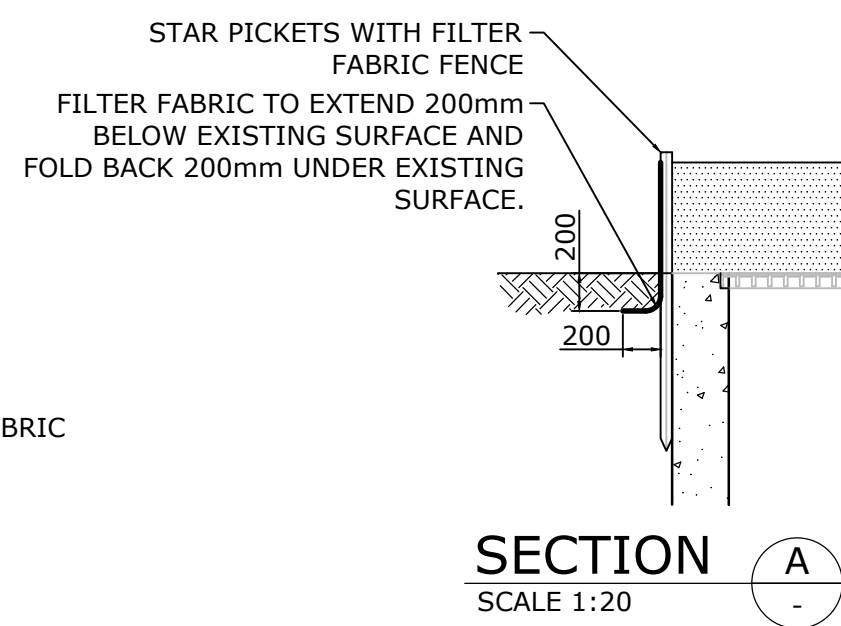
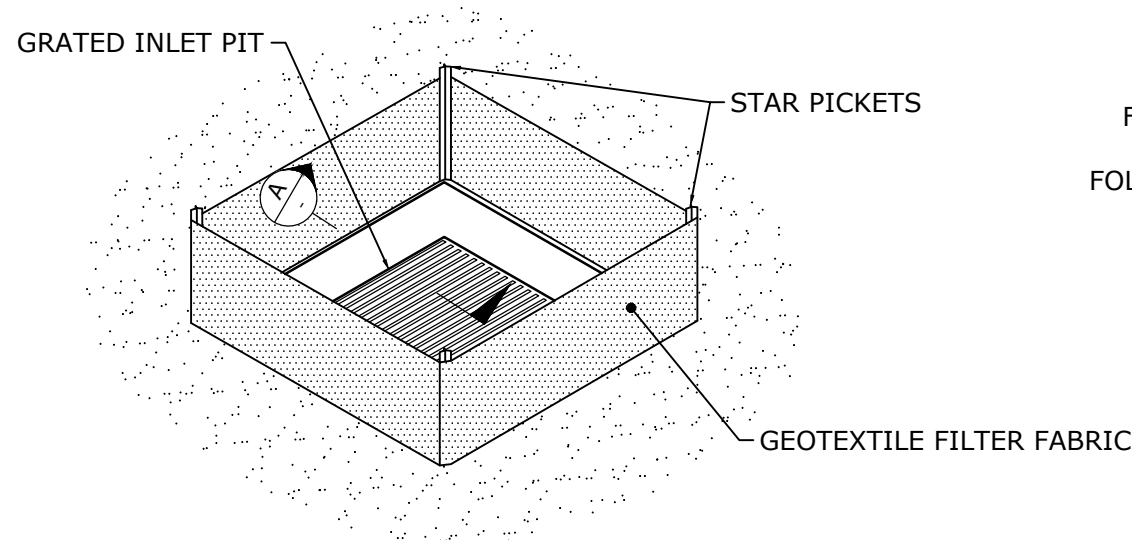


REV	AMENDMENT / REASON FOR ISSUE	DATE	DES.	DWN.
E	RE-ISSUED FOR DETAILED DESIGN	19.09.23	SW	SW
D	ISSUED FOR DETAILED DESIGN	15.09.23	SW	IR
C	RE-ISSUED FOR DRAFT REF	28.06.23	SW	IR
B	ISSUED FOR DRAFT REF	25.05.23	SW	IR
A	ISSUED FOR CLIENT REVIEW	31.10.22	LY	IR





SEDIMENT FENCE INSTALLATION DETAILS



SEDIMENT FENCE CONSTRUCTION NOTES:

1. CONSTRUCT ALL SEDIMENT CONTROL FENCES ALONG THE CONTOUR WHERE POSSIBLE.
2. WHERE SEDIMENT CONTROL FENCES ARE NOT CONSTRUCTED ALONG THE CONTOUR INCORPORATE RETURN PANELS AT REGULAR INTERVALS NOT EXCEEDING 20m.
3. ALL STAR PICKETS SHALL INCORPORATE APPROVED SAFETY CAPS.
4. DIG A 150mm DEEP TRENCH ALONG THE UPSLOPE LINE OF THE FENCE FOR THE BOTTOM OF THE FABRIC TO BE ENTRENCHED. BACKFILL TRENCH OVER BASE FABRIC. FIX SELF-SUPPORTING GEOTEXTILE TO UPSLOPE SIDE OF POSTS WITH WIRE TIES OR AS RECOMMENDED BE GEOTEXTILE MANUFACTURER. JOIN SECTIONS OF FABRIC AT A SUPPORT POST WITH A 150mm OVERLAP.
5. WHERE APPROVED BY THE SUPERINTENDENT DUMP ROCK MAY BE USED TO ANCHOR THE GEOTEXTILE IN LIEU OF A TRENCH.

1. ALL WORK SHALL BE GENERALLY CARRIED OUT IN ACCORDANCE WITH
 - 1.1. LOCAL AUTHORITY REQUIREMENTS,
 - 1.2. EPA - POLLUTION CONTROL MANUAL FOR URBAN STORMWATER, AND
 - 1.3. LANDCOM NSW - MANAGING URBAN STORMWATER: SOILS AND CONSTRUCTION (THE "BLUE BOOK").
2. EROSION AND SEDIMENT CONTROL DRAWINGS AND NOTES ARE PROVIDED FOR THE WHOLE OF THE EXTENT OF WORKS. STAGING THESE WORKS MAY REQUIRE THE DESIGN TO BE MODIFIED AND VARIATION TO THESE DETAILS MAY REQUIRE APPROVAL BY RELEVANT AUTHORITIES.
3. ALL EROSION AND SEDIMENT CONTROL DEVICES TO BE MAINTAINED TO THE SATISFACTION OF THE SUPERINTENDENT AND THE LOCAL AUTHORITY.
4. ALL VEHICLES SHALL ONLY ENTER AND EXIT THE SITE VIA THE NOMINATED TEMPORARY CONSTRUCTION ACCESS.
5. ALL EXITING VEHICLES SHALL BE CLEANED AND INSPECTED BEFORE EXITING.
6. ATTEMPT TO BE MADE TO MINIMISE THE AREA OF SITE BEING DISTURBED AT ANY ONE TIME.
7. FOLLOWING CONSTRUCTION OF STORMWATER PITS, PREVENT SITE RUNOFF ENTERING THE PITS UNLESS SILT FENCES ARE ERECTED AROUND PITS.
8. ALL STOCKPILES OF MATERIALS TO BE PROTECTED FROM SCOUR AND EROSION. STOCKPILES OF LOOSE MATERIALS SHOULD BE AVOIDED NEAR ANY DRAINAGE PITS, ROADWAYS AND NEAR IN WATERCOURSES.
9. CONTRACTOR TO ENSURE ALL NOMINATED DEVICES TO BE REINSTALLED FOLLOWING CLOSURE OF WORKING DAY, MODIFIED AS REQUIRED TO SUIT THE BEST SITE CONDITIONS AT THE TIME.
10. WATER FROM UPSTREAM OF THE SITE TO BE CONTROLLED SUCH THAT IT DOES NOT ENTER THE DISTURBED SITE.
11. MAINTAIN ALL STORMWATER PIPES AND PITS CLEAR OF DEBRIS AND SEDIMENT.
12. STORMWATER SYSTEM AND ALL DEVICES TO BE INSPECTED AND CLEANED OUT AS REQUIRED AFTER EACH STORM EVENT.
13. WATER QUALITY TESTING MUST BE UNDERTAKEN BY SUITABLY QUALIFIED ENVIRONMENTAL CONSULTANT PRIOR TO ANY DISCHARGE OF SITE STORMWATER, GROUNDWATER AND SEEPAGE WATER:
 - 13.1. ENVIRONMENTAL CONSULTANT TO OUTLINE PROPOSED AND ONGOING MONITORING MEASURES THAT WILL BE MONITORING THE QUALITY OF WATER DISCHARGED FROM THE SITE. FREQUENCY, VALIDATION, AND ALL CONTINGENCIES TO BE OUTLINED BY CONSULTANT.
 - 13.2. ALL REMEDIAL MEASURES AS NOMINATED BY ENVIRONMENTAL CONSULTANT TO BE APPLIED BY CONTRACTOR.
 - 13.3. TESTING AND REPORTING TO BE IN COMPLIANCE WITH ALL RELATIVE AUSTRALIAN STANDARDS AND GUIDELINES.

THIS DRAWING IS TO BE VIEWED IN COLOUR AS SOME FEATURES / SYMBOLS ARE DIFFERENTIATED BY COLOUR. DRAWING NOT TO BE RELIED ON IF PRINTED IN GREYSCALE.

NOT FOR CONSTRUCTION

NSW LAND AND HOUSING CORPORATION

35-39 WEST STREET, 5 LEO AVE LURNEA NSW 2170
LOT 15,16,17/DP21559, LOT 11/DP215659
NEW HOUSING DEVELOPMENT
EROSION & SEDIMENT CONTROL DETAIL

FILENAME:	PROJECT NUMBER	DRAWING NUMBER	REVISION
211913_111_ESD.DWG	211913	111	D

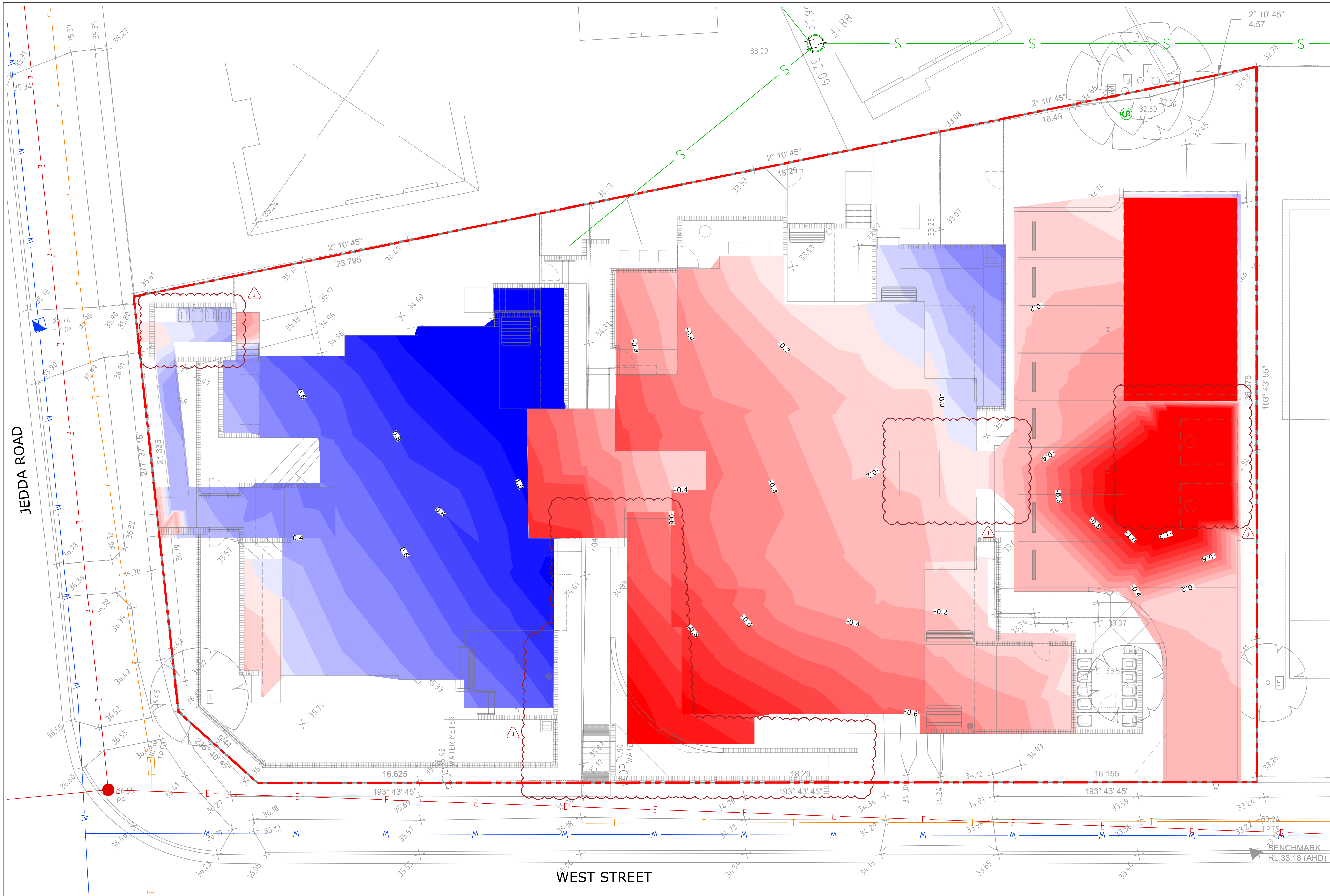
SHEET SIZE					
A1					
100mm ON ORIGINAL DRAWING - DO NOT SCALE DRAWING					
COORDS: GDA2020 MGA ZONE 56 DATUM: ALL LEVELS TO A.H.D.					
SCALE: N.T.S.					
SURVEYED: MEPSTEAD SURVEY DATE: 29.09.2021					
APPROVED / PROJECT LEADER					
MARK BAKER					
REV	AMENDMENT / REASON FOR ISSUE	DATE	DES.	DWN.	
D	ISSUED FOR DETAILED DESIGN	15.09.23	SW	IR	
C	RE-ISSUED FOR DRAFT REF	28.06.23	SW	IR	
B	ISSUED FOR DRAFT REF	25.05.23	SW	IR	
A	ISSUED FOR CLIENT REVIEW	31.10.22	LY	IR	

PUBLIC UTILITIES:

THE SERVICES SHOWN ARE DERIVED FROM PLANS OBTAINED FROM THE RELEVANT SERVICE AUTHORITIES. IT IS THE RESPONSIBILITY OF THE CONTRACTOR TO ARRANGE WITH THE RELEVANT SERVICE AUTHORITIES FOR CONFIRMATION OF SERVICES AND THEIR LOCATION BEFORE EXCAVATION WORK COMMENCES.



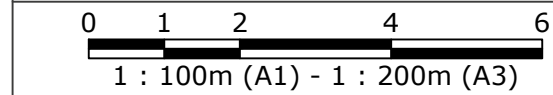
tonkin.com.au



LEGEND		
CUT & FILL DEPTH RANGES		Colour
Lower_value	Upper_value	
-2	to -1.8	m
-1.8	to -1.6	m
-1.6	to -1.4	m
-1.4	to -1.2	m
-1.2	to -1	m
-1	to -0.8	m
-0.8	to -0.6	m
-0.6	to -0.4	m
-0.4	to -0.2	m
-0.2	to 0	m
0	to 0.2	m
0.2	to 0.4	m
0.4	to 0.6	m
0.6	to 0.8	m
0.8	to 1	m
1	to 1.2	m
1.2	to 1.4	m
1.4	to 1.6	m
1.6	to 1.8	m
1.8	to 2	m
2	to 2.2	m

- NOTE:**
- CUT & FILL VOLUMES
 - CUT -1088.503m³
 - FILL 611.594m³
 - BALANCE -476.910m³
 - VOLUMES HAVE BEEN CALCULATED BETWEEN EXISTING SURFACE AND THE PROPOSED BULK EARTHWORKS SURFACE. IT DOES NOT TAKE INTO ACCOUNT THE FILL VOLUME REQUIRED TO BACKFILL AGAINST STRUCTURE NOR ANY STRIPPING OF TOP SOIL. EARTHWORKS CONTRACTOR TO VERIFY FINAL BACKFILL VOLUME. THESE ARE NOMINAL EARTHWORKS AND AN ESTIMATION ONLY.
 - BULK EARTHWORKS AREA BASED ON THE FOLLOWS DEPTHS FROM FINISHED SURFACE LEVELS:
 - BUILDING SLABS & SUBGRADE 250mm
 - CONCRETE PAVEMENT & SUBGRADE 250mm
 - VOLUMES DO NOT TAKE INTO ACCOUNT ANY BULKING OR COMPACTION OF ANY SOILS.
 - VOLUMES DO NOT TAKE INTO ACCOUNT EARTHWORKS FOR MINOR FOOTPATH AND LANDSCAPING.
 - PROPOSED UTILITIES AND STORMWATER TRENCHES ARE NOT INCLUDED IN THIS BULK EARTHWORKS
 - VOLUMES VOLUMES DO NOT TAKE INTO ACCOUNT TEMPORARY WORKS OR STAGING

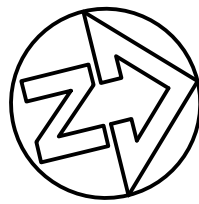
THIS DRAWING IS TO BE VIEWED IN COLOUR AS SOME FEATURES / SYMBOLS ARE DIFFERENTIATED BY COLOUR. DRAWING NOT TO BE RELIED ON IF PRINTED IN GREYSCALE.



100mm ON ORIGINAL DRAWING - DO NOT SCALE DRAWING

REV	DESCRIPTION	DATE	DES.	DWN.
J	DRAFT REF MODIFICATION	12.06.24	TP	IR
I	DRAFT REF MODIFICATION	07.06.24	TP	IR
REV	AMENDMENT / REASON FOR ISSUE	DATE	DES.	DWN.

COORDS: GDA2020 MGA ZONE 56
DATUM: ALL LEVELS TO A.H.D.
SCALE: 1:100
SURVEYED:MEPSTEAD
SURVEY DATE:29.09.2021
APPROVED / PROJECT LEADER
MARK BAKER



PUBLIC UTILITIES:
THE SERVICES SHOWN ARE DERIVED FROM PLANS OBTAINED FROM THE RELEVANT SERVICE AUTHORITIES. IT IS THE RESPONSIBILITY OF THE CONTRACTOR TO ARRANGE WITH THE RELEVANT SERVICE AUTHORITIES FOR CONFIRMATION OF SERVICES AND THEIR LOCATION BEFORE EXCAVATION WORK COMMENCES.

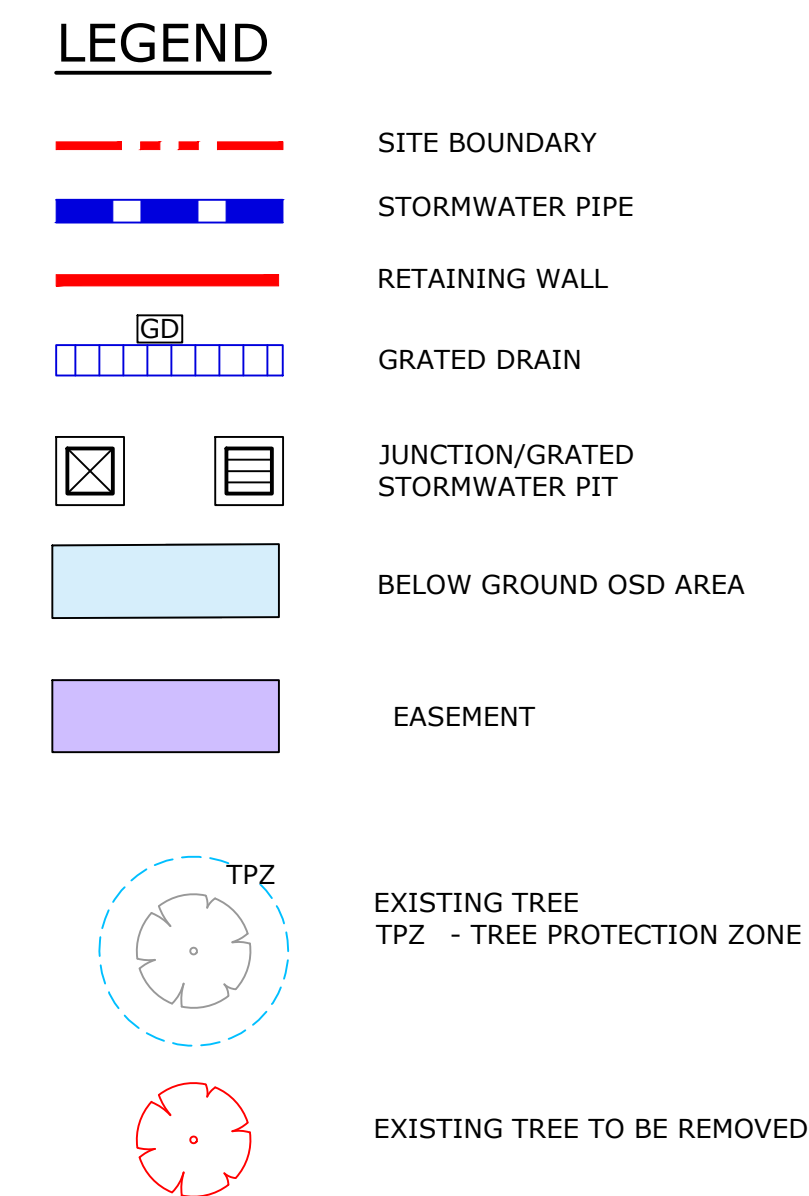


tonkin
tonkin.com.au

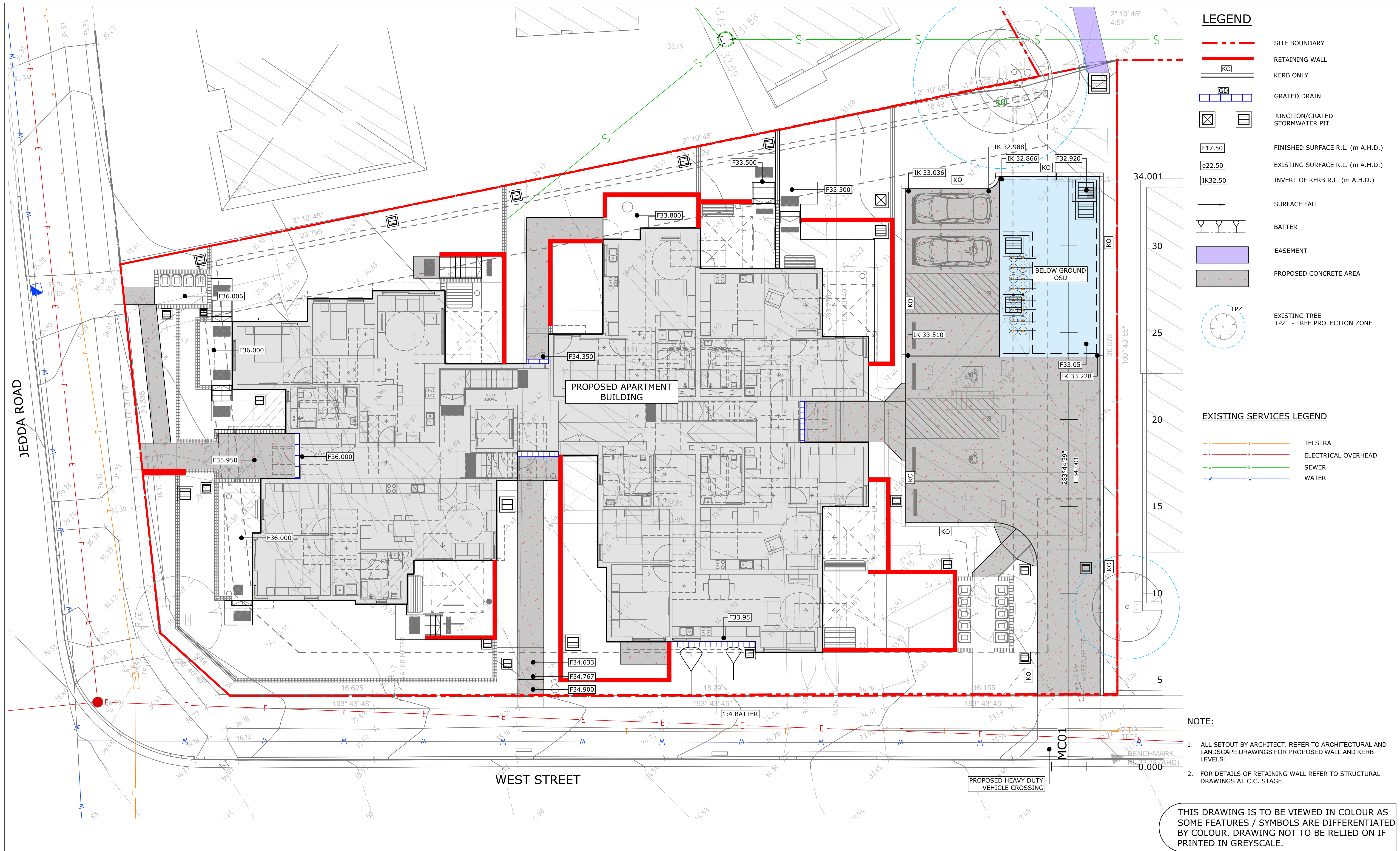
NOT FOR CONSTRUCTION
NSW LAND AND HOUSING CORPORATION

35-39 WEST STREET, 5 LEO AVE LURNEA NSW 2170
LOT 15,16,17/DP21559, LOT 11/DP215659
NEW HOUSING DEVELOPMENT
CUT AND FILL PLAN

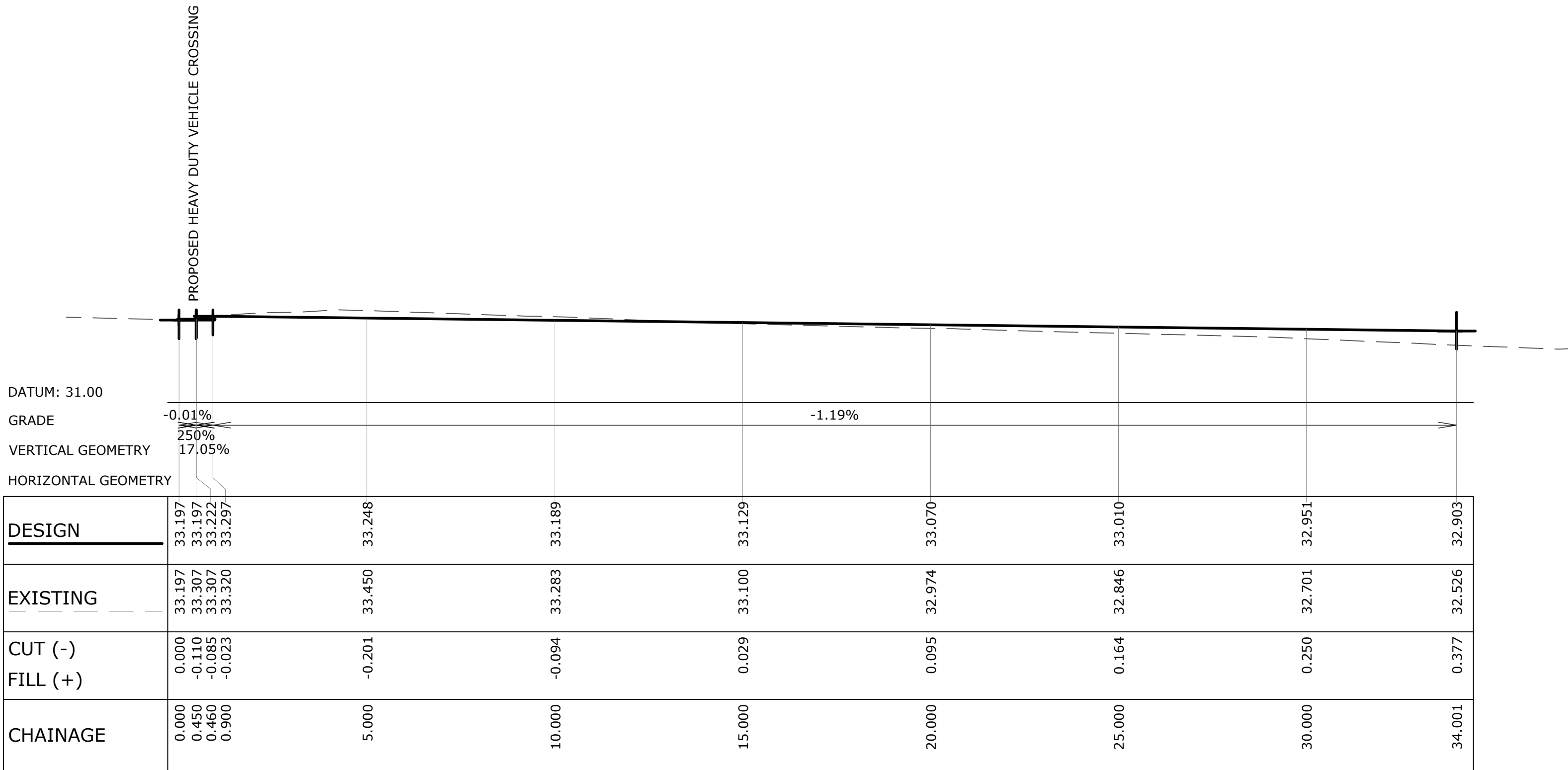
FILENAME:	PROJECT NUMBER	DRAWING NUMBER	REVISION
211913_201_BEW.DWG	211913	201	J



1. PLAN TO BE READ IN CONJUNCTION WITH ARCHITECTURAL AND LANDSCAPE PLAN.
2. REFER ARCHITECT FOR DEMOLITION PLAN OF EXISTING STORMWATER PITS AND PIPES.
3. REFER HYDRAULIC ENGINEER PLAN FOR DOWNPIPE LOCATIONS.
4. REFER ALL MANUFACTURER'S GUIDELINES AND SPECIFICATION FOR PROPRIETARY PRODUCTS.
5. ALL PIPES TO BE AT MIN. 1% U.N.O.
6. PITS WITH INVERT DEPTHS IN EXCESS OF 1.2m ARE TO BE PROVIDED WITH STEP IRONS AS PER AS1657.
7. SUBSOIL DRAIN FOR LANDSCAPE AREA TO BE CONNECTED INTO NEAREST DRAINAGE PIT
8. WHERE SUBSOIL DRAINAGE LINES ARE WITHIN THE DRIPLINE OF PROPOSED TREES, THE DEPTH OF COVER IS TO BE 800mm MINIMUM
9. CONTRACTOR TO EXERCISE CAUTION WHEN WORKING IN PROXIMITY TO EXISTING COUNCIL STORMWATER ASSETS, AND TO INDEPENDENTLY VERIFY THE DEPTH OF COVER AND LOCATION OF THE EXISTING DN600 STORMWATER PIPE.
10. PROVIDE MINIMUM Ø50mm OVERFLOW HOLES THROUGH RETAINING WALL FOR POS AND TERRACES.



<div><div><div>0</div><div>1</div><div>2</div><div>4</div><div>6</div></div><div>1 : 100m (A1) - 1 : 200m (A3)</div></div> <div>100mm ON ORIGINAL DRAWING - DO NOT SCALE DRAWING</div>				SHEET SIZE A1			
				COORDS: GDA2020 MGA ZONE 56 DATUM: ALL LEVELS TO A.H.D.			
				SCALE: 1:100			
E	ISSUED FOR DETAILED DESIGN			15.09.23	SW	IR	SURVEYED:MEPSTEAD SURVEY DATE:29.09.2021 APPROVED / PROJECT LEADER MARK BAKER
D	RE-ISSUED FOR DRAFT REF			28.06.23	SW	IR	
C	ISSUED FOR DRAFT REF			25.05.23	SW	IR	
B	RE-ISSUED FOR CLIENT REVIEW			10.05.23	SW	IR	
A	ISSUED FOR CLIENT REVIEW			31.10.22	LY	IR	
REV	AMENDMENT / REASON FOR ISSUE			DATE	DES.	DWN.	
© TONKIN CONSULTING							



LONGITUDINAL PROFILE - MC01

HORIZONTAL SCALE 1 : 100

VERTICAL SCALE 1 : 100

THIS DRAWING IS TO BE VIEWED IN COLOUR AS SOME FEATURES / SYMBOLS ARE DIFFERENTIATED BY COLOUR. DRAWING NOT TO BE RELIED ON IF PRINTED IN GREYSCALE.

01246

1 : 100m (A1) - 1 : 200m (A3)

100mm ON ORIGINAL DRAWING - DO NOT SCALE DRAWING

SHEET SIZE

A1

						COORDS: GDA2020 MGA ZONE 56
						DATUM: ALL LEVELS TO A.H.D.
						SCALE: 1:100 HORIZ.
						1:100 VERT.
						SURVEYED:MEPSTEAD
						SURVEY DATE:29.09.2021
						APPROVED / PROJECT LEADER
						MARK BAKER
REV	AMENDMENT / REASON FOR ISSUE	DATE	DES.	DWN.		

PUBLIC UTILITIES:
THE SERVICES SHOWN ARE DERIVED FROM PLANS OBTAINED FROM THE RELEVANT SERVICE AUTHORITIES. IT IS THE RESPONSIBILITY OF THE CONTRACTOR TO ARRANGE WITH THE RELEVANT SERVICE AUTHORITIES FOR CONFIRMATION OF SERVICES AND THEIR LOCATION BEFORE EXCAVATION WORK COMMENCES.



tonkin

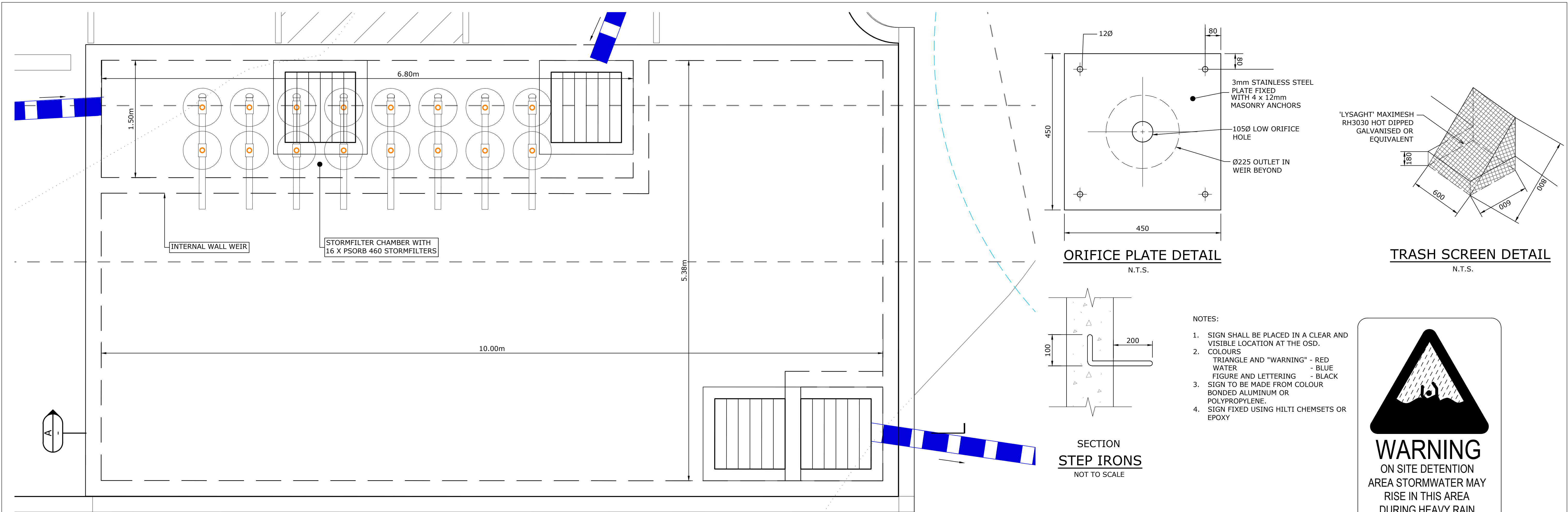
tonkin.com.au

NOT FOR CONSTRUCTION

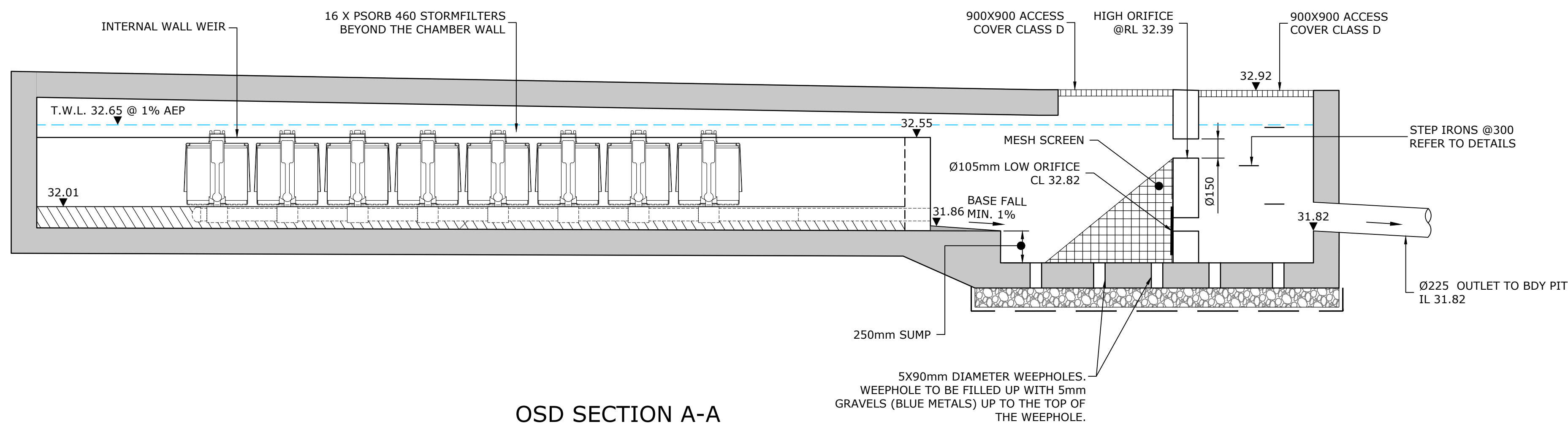
NSW LAND AND HOUSING CORPORATION

35-39 WEST STREET, 5 LEO AVE LURNEA NSW 2170
LOT 15,16,17/DP21559, LOT 11/DP215659
NEW HOUSING DEVELOPMENT
LONGITUDINAL PROFILE - MC01

FILENAME:	PROJECT NUMBER	DRAWING NUMBER	REVISION
211913_431_LOS.DWG	211913	431	C



DETAIL - BELOW GROUND OSD TANK
SCALE 1:25



OSD SECTION A-A
SCALE 1:25

ORIFICE PLATE DETAIL
N.T.S.

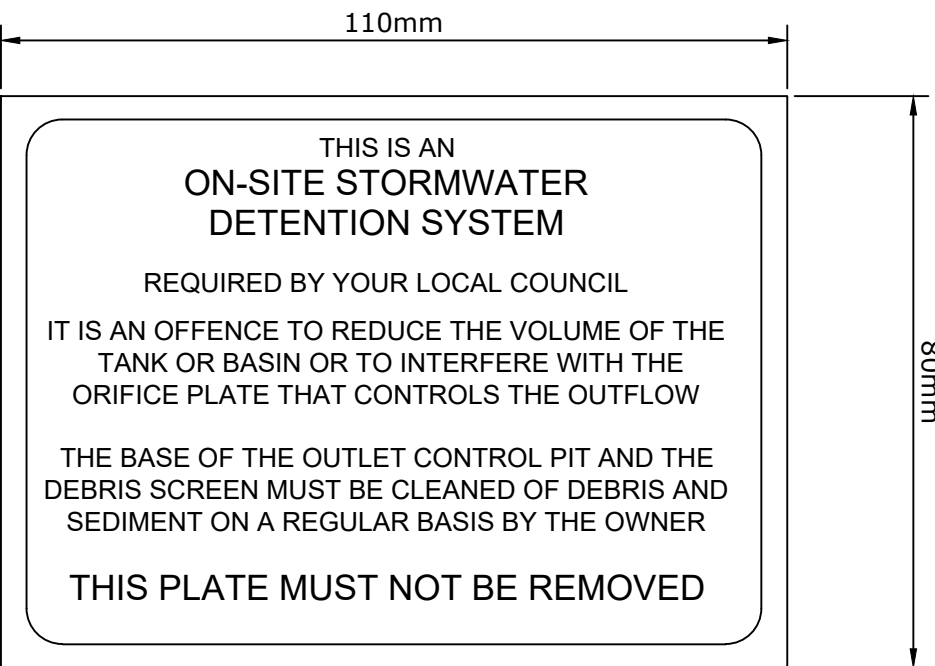
TRASH SCREEN DETAIL
N.T.S.

SECTION
STEP IRONS
NOT TO SCALE

NOTES:

- SIGN SHALL BE PLACED IN A CLEAR AND VISIBLE LOCATION AT THE OSD.
- COLOURS
TRIANGLE AND "WARNING" - RED
WATER - BLUE
FIGURE AND LETTERING - BLACK
- SIGN TO BE MADE FROM COLOUR BONDED ALUMINUM OR POLYPROPYLENE.
- SIGN FIXED USING HILTI CHEMSETS OR EPOXY

ON SITE STORMWATER DETENTION WARNING SIGN
NTS



OSD SIGN
NTS

NOTES:

- CORNERS SQUARE
- COLOURS:
ETCHED AND FILLED BLACK LEDGEND ON A NATURAL SILVER BACKGROUND
- CONSTRUCTED FROM ALUMINIUM 0.9 MILL.
- THIS SIGN SHALL BE PLACED IN A VISIBLE LOCATION NEAR A DISCHARGE CONTROL PIT OR AT THE ACCESS TO ONE
- SIGN FIXED USING HILTI CHEMSETS OR EPOXY

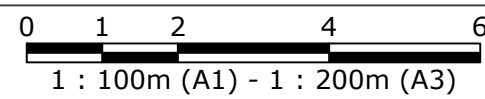


CONFINED SPACE SIGN
NTS

NOTES:

- ACONFINED SPACE DANGER SIGN SHALL BE PLACED NEXT TO EACH AND EVERY ACCESS POINT SO THAT THEY ARE VISIBLE TO PERSONS ENTERING ANY BELOW GROUND TANK OR PIT.
- COLOURS:
"DANGER" AND BACKGROUND - WHITE
ELLIPTICAL AREA - RED
RECTANGLE CONTAINING ELLIPSE - BLACK
LETTERING AND BORDER - BLACK
- MINIMUM DIMENSIONS OF THE SIGN
LARGE ENTRIES - 300mm x 450mm
SMALL ENTRIES - 250mm x 180mm
- SIGN TO BE MADE FROM COLOUR BONDED ALUMINIUM OR POLYPROPYLENE.
- SIGN FIXED USING HILTI CHEMSETS OR EPOXY

THIS DRAWING IS TO BE VIEWED IN COLOUR AS SOME FEATURES / SYMBOLS ARE DIFFERENTIATED BY COLOUR. DRAWING NOT TO BE RELIED ON IF PRINTED IN GREYSCALE.



SHEET SIZE
A1

REV	AMENDMENT / REASON FOR ISSUE	DATE	DES.	DWN.	MARK BAKER
D	ISSUED FOR DETAILED DESIGN	15.09.23	SW	IR	
C	RE-ISSUED FOR DRAFT REF	28.06.23	SW	IR	
B	ISSUED FOR DRAFT REF	25.05.23	SW	IR	
A	ISSUED FOR CLIENT REVIEW	31.10.22	LY	IR	

© TONKIN CONSULTING

PUBLIC UTILITIES:

THE SERVICES SHOWN ARE DERIVED FROM PLANS OBTAINED FROM THE RELEVANT SERVICE AUTHORITIES. IT IS THE RESPONSIBILITY OF THE CONTRACTOR TO ARRANGE WITH THE RELEVANT SERVICE AUTHORITIES FOR CONFIRMATION OF SERVICES AND THEIR LOCATION BEFORE EXCAVATION WORK COMMENCES.



tonkin
tonkin.com.au

NOT FOR CONSTRUCTION

NSW LAND AND HOUSING CORPORATION

35-39 WEST STREET, 5 LEO AVE LURNEA NSW 2170
LOT 15,16,17/DP21559, LOT 11/DP215659
NEW HOUSING DEVELOPMENT
DETAIL SHEET

FILENAME:	PROJECT NUMBER	DRAWING NUMBER	REVISION
211913_601_DET.DWG	211913	601	D

T:\2021\211913 LAHC LURNEA - MCINTOSH PHELPS\4_WORKING\1 CAD\01 DWG\211913_601_DET.DWG -601-DET- (15-09-23 4:28:38PM)